

# i3HUDDLE

## ADMINISTRATOR SETUP



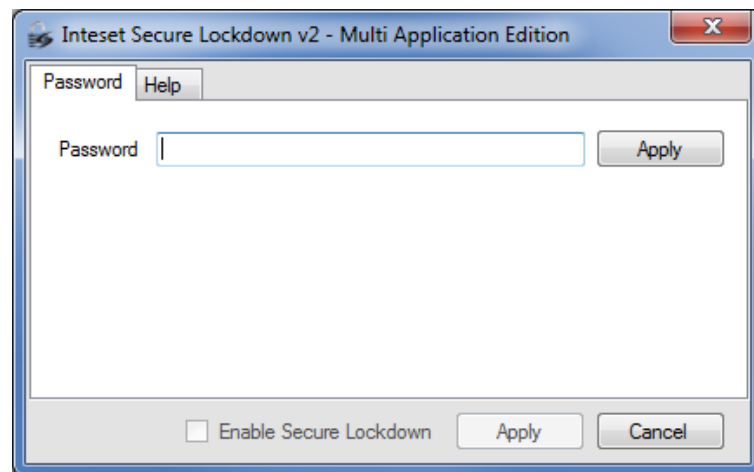
## Inteset Secure Lockdown v2

The i3HUDDLE OPS user interface includes the Secure Lockdown v2 product that is not created or owned by i3-TECHNOLOGIES. It has been bundled with the i3HUDDLE product for your convenience. For an advanced user manual and complete instructions for this product, visit the Inteset product website: <http://www.inteset.com>.

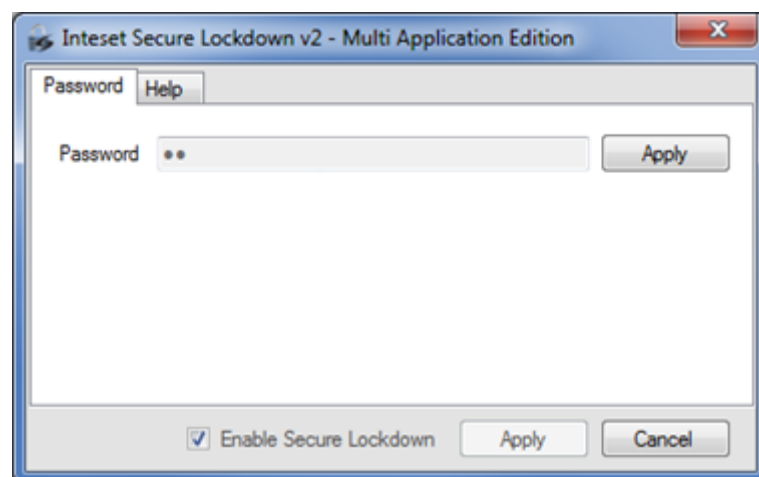
When starting the i3HUDDLE OPS, Secure Lockdown will try to register its licence (which is already inserted). Make sure the OPS is connected to the internet, either by WiFi or a network cable, before starting Windows 10. Also make sure the Windows Licence key is inserted first.

### Disable Kiosk mode

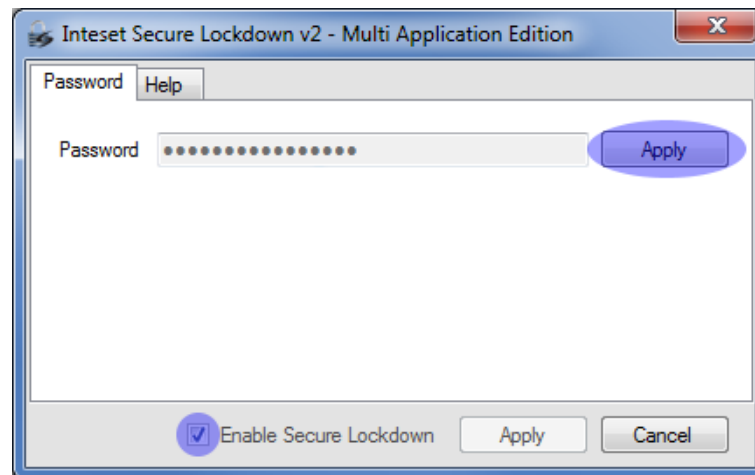
The i3HUDDLE OPS uses the services of Inteset Secure Lockdown v2 to provide a kiosk user experience. To disable the locked kiosk mode, press *Alt + Shift + S*.



The standard password (unless changed by user) is: **i3**

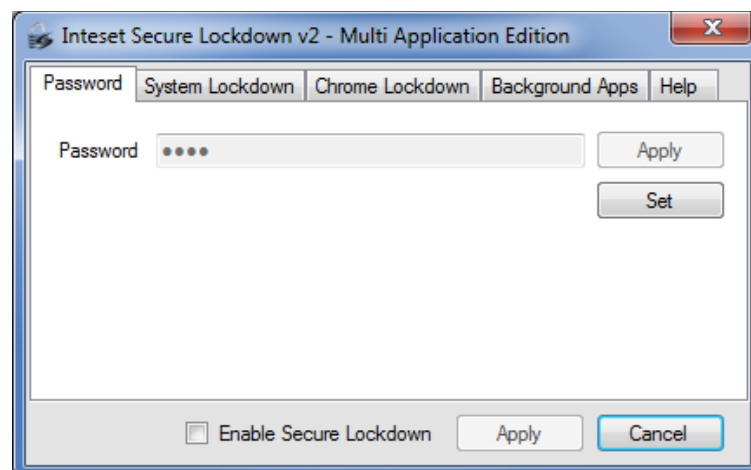


After entering the password, press *Apply*, and deselect the *Enable Secure Lockdown* function.



A message will appear to reboot the system. This is required to fully disable the kiosk mode. Press *OK* to restart in normal Windows 10 Operating System mode.

### Change Password.



**Set** – this button allows you to set/change the password for accessing Secure Lockdown. Press the *Set* button to reveal the following password entry fields.

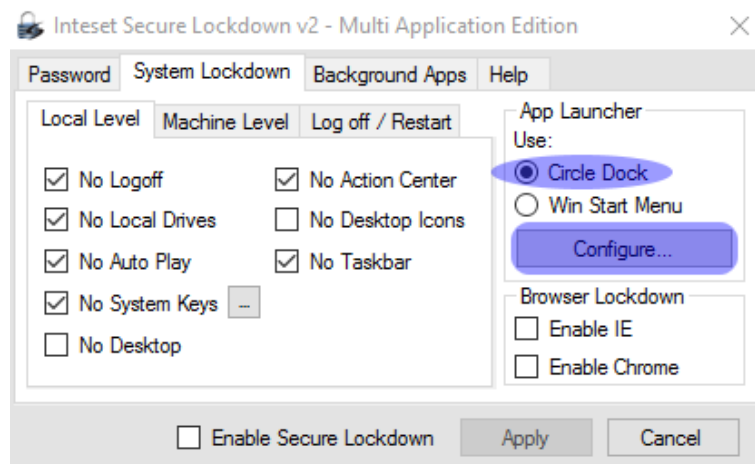
**New password** – to add a new password requirement to access the configuration screen, enter a password in the *New Password* field. A password can be any alpha numeric and special key combination. Passwords are not case sensitive.

**Confirm password** – enter the same password in the Confirm Password field, then press the *Apply* button to apply the new password.

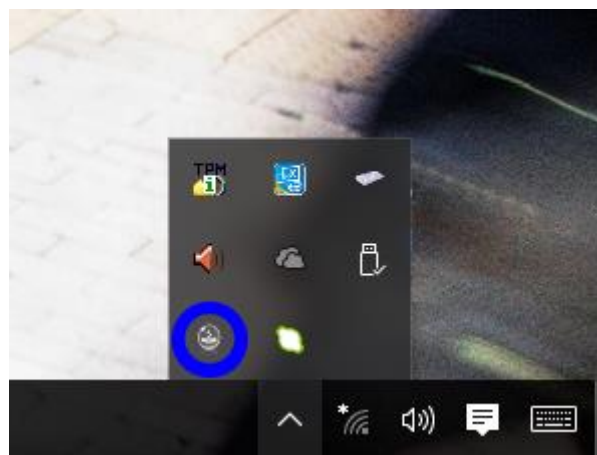
**VERY IMPORTANT:** be sure to remember the password as you will not be able to access the application without it. And, if the application is locked in kiosk mode, you will not be able to unlock it without the password, and an OS rebuild will be necessary.

## Circle Dock

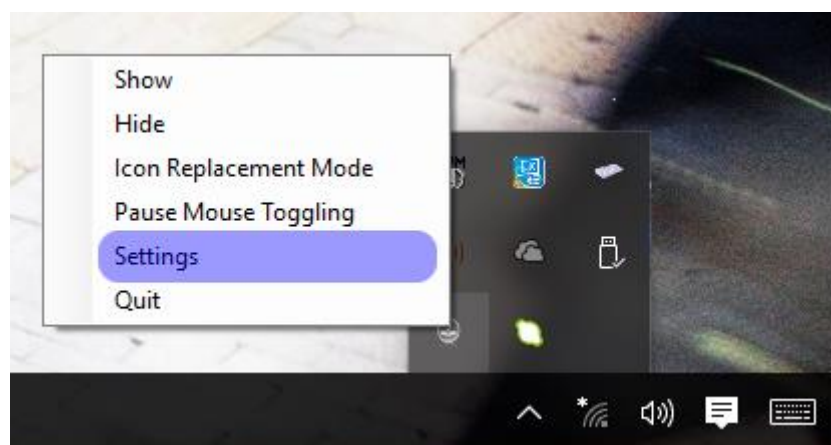
You can make adjustments to the Circle Dock with the included Circle Dock configuration utility. To start the utility in unlocked user mode, settings window by *Alt + Shift + S*.



On the *Local Level* tab, select the Circle Dock, and press *Configure...* . The Circle Dock utility will now run in the background (look for icon in the notifications tray).



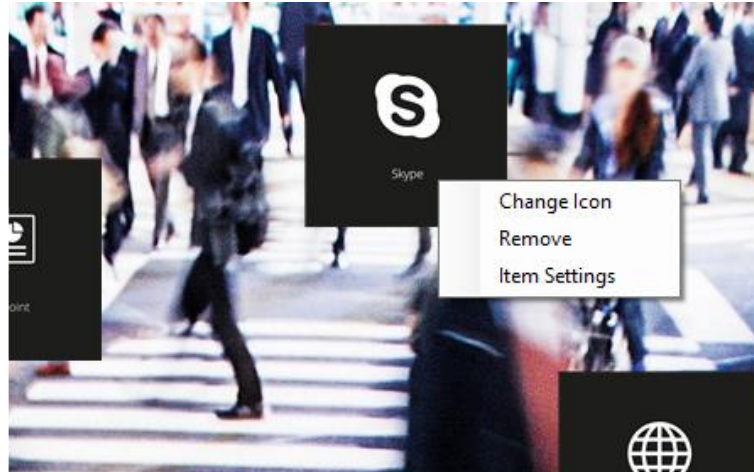
Open the Circle Dock configuration with a right mouse button, and press Settings.



## Add/Remove applications on the Circle Dock.

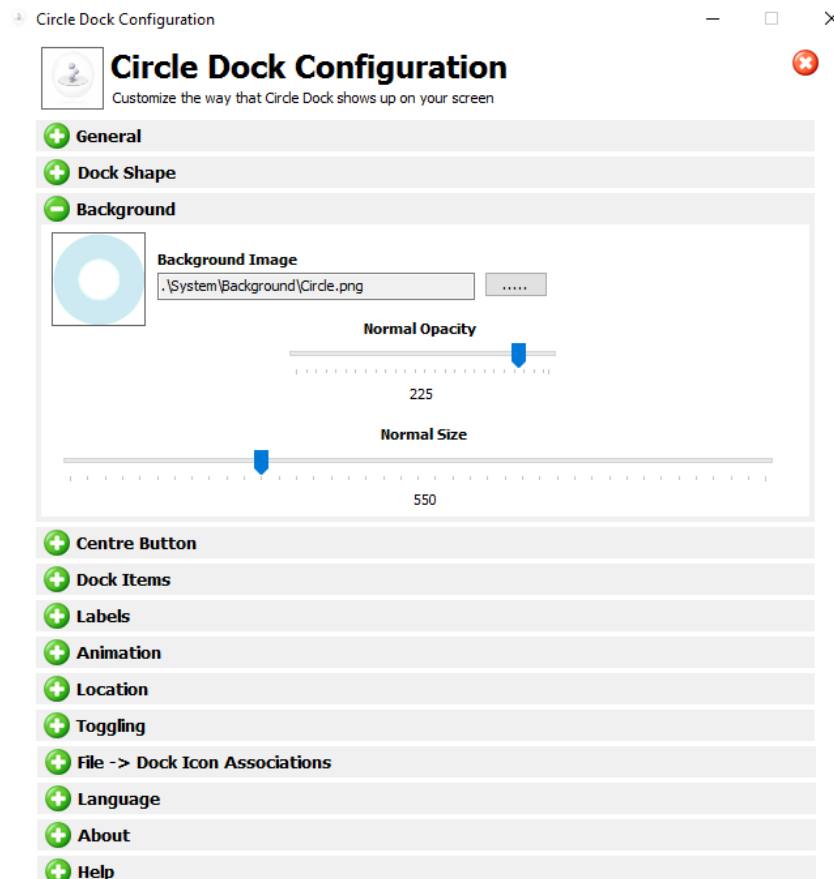
### REMOVE APPLICATION

You can remove applications by simply clicking with a right mouse button on the icon, then select *Remove*.

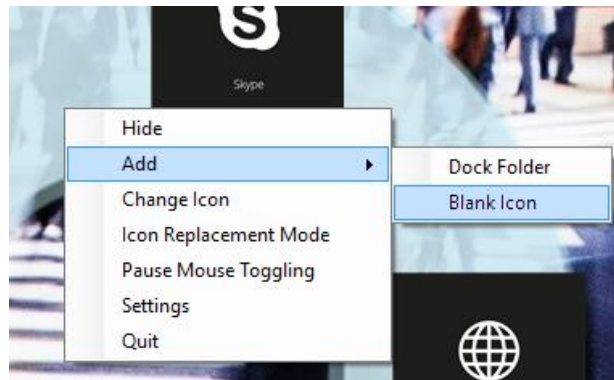


### ADD APPLICATION

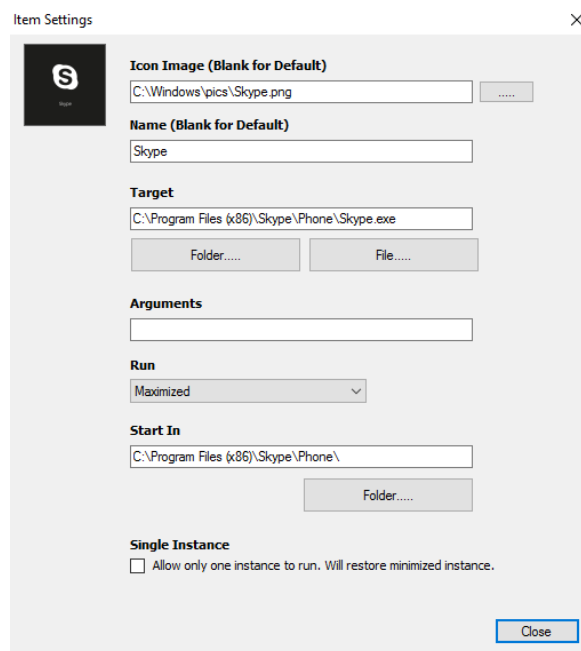
To add an application to the Circle Dock, you need to click with a right mouse button on the Circle Dock's background. Standard, this background is hidden. To show the background, open the Circle Dock's *Settings* and change the *Opacity* slider in the *Background* tab.



Click with a right mouse button on the now visible background, and *Add* a new *Blank Icon*.



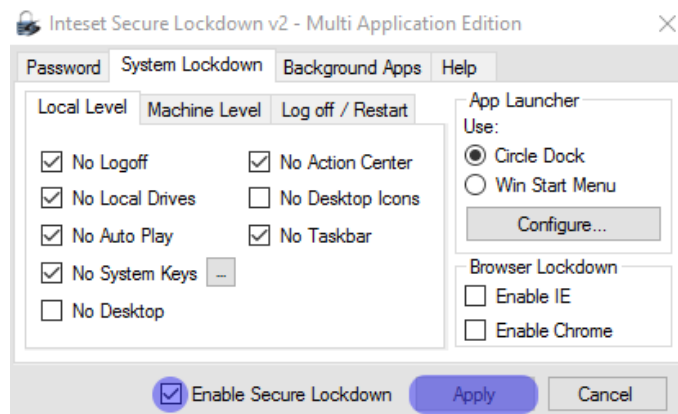
You can then change the *Item Settings* of the item on the Circle Dock with a right mouse click.



Afterwards, change the *Opacity* of the background back to 0, to standard value.

## Enable Kiosk Mode

Enabling the locked Kiosk mode can be done the same way as disabling it. Check the *Enable Secure Lockdown* and press *Apply*.



## Inteset Keyboard Helper

Before you lock the i3HUDDLE in Kiosk Mode, make sure the Keyboard Helper is active and running in the background. You should be able to see a transparent keyboard-icon in the top left corner.

To start, find the Keyboard Helper application in the Windows Start Menu, in the Inteset folder.

AUTHORISED DISTRIBUTOR



[WWW.I3-TECHNOLOGIES.COM](http://WWW.I3-TECHNOLOGIES.COM)  
[INFO@I3-TECHNOLOGIES.COM](mailto:INFO@I3-TECHNOLOGIES.COM)